

*Experience the Difference*

## Laboratory Communication & Safety Labels



**TimeMed Labeling Systems, Inc.**

144 Tower Drive  
Burr Ridge, IL 60527  
Phone: 800-323-4840  
Fax: 800-548-5359  
[www.TimeMed.com](http://www.TimeMed.com)

**PHARMEX**<sup>®</sup>  
A Division of TimeMed

**T**imeMed understands the unique work flow requirements of a laboratory. That's why we've designed our line of laboratory labels to help you keep everything organized and your staff well informed through the identification of specimens and dangerous substances. Help secure, track and document samples with our tamper evident, hazardous communication and safety labels.

Visit our website at [www.TimeMed.com](http://www.TimeMed.com) to view the thousands of stock warning and alert labels. Contact your TimeMed Sales Representative at 800-323-4840 for assistance with custom laboratory tapes and labels, microscope slide labels or specimen tracking systems.

See the reverse side for our most popular laboratory communication and safety labels.

# Communication & Safety Labels

Communication and Safety labels from TimeMed insure safety and efficiency. In accordance with various federal and state regulations, these communication, safety and tamper evident labels can withstand extreme temperature changes, as well as, quickly identify containers, rooms and materials.

\* To place a website order for any of these products, simply click on the product code and you will be taken directly to the ordering page for that product.

## Communication and Safety Labels

### Hi-Lo Temp Tape

Product Code	Tape Width	Carrier Width	Core Size	Material/Adhesive	Qty.
AT-312	1/2"	1/2"	1"	Temp Tape	300"/RL
AT-334	3/4"	3/4"	1"	Temp Tape	300"/RL
AT-301	1"	1"	1"	Temp Tape	300"/RL

### Plastic Dispensers

HD-2	Holds a variety of tape and/or label products up to 1-1/8"				1EA
------	--	--	--	--	-----

### Biohazard Labels

Product Code	Label Size	Core Size	Material/Adhesive	Qty.
BH-11	1" x 1"	1"	SML/Permanent	1M/RL
BH-405	3" x 2"	1"	SML/Permanent	500/RL
BH-55	5" x 5"	1"	SML/Permanent	250/RL

### STAT Labels

Product Code	Label Size	Core Size	Material/Adhesive	Qty.
STBC-0816	1/2" x 1"	1"	SML/Permanent	1M/RL
STSP-2406	1-1/2" x 3/8"	1"	SML/Permanent	1M/RL

### Hazard or Toxic Communication Labels

Product Code	Label Size	Carrier Width	Core Size	Material/Adhesive	Qty.
LS-200	1-1/8" x 3-1/2"	3-3/4"	1"	High Gloss/Perm	1M/RL
LS-201	1-1/2" x 4"	4-1/4"	1"	High Gloss/Perm	1M/RL
LS-202	7/8" x 7/8"	1"	1"	High Gloss/Perm	800/RL

### Tamper Evident Labels

Product Code	Label Size	Carrier Width	Core Size	Material/Adhesive	Qty.
TRL-1	4-1/8" x 1/2"	4-1/4"	Sheeted	Lt Weight/Perm	1M/BX
TRL-2N	6" x 1/2"	6-1/2"	Sheeted	Film/Perm	1M/BX
TRL-61	6-1/2" x 1-1/2"	1-1/2"	1"	Film/Perm	200/RL-1RL/BX

### Hand-Held Labeling Systems

Product Code	Label Size	Carrier Width	Core Size	Material/Adhesive	Qty.
CS-2	-	-	-	-	1EA/BX
CS-RO	5/8" x 15/16"	15/16"	1"	Litho/Perm	1M/RL-24RLS/BX

### MedVision® Labels

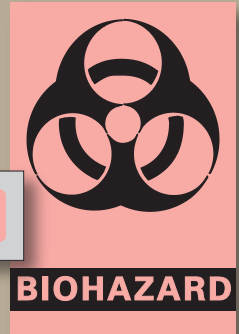
Product Code	Label Size	Color	Material/Adhesive	Roll Qty.
MV02FR8036	1-7/16" x 3/8"	Fluorescent Red	Permanant	666
MV03FG0714	1-7/16" x 1"	Fluorescent Green	Removable	666
MV04FR0760	2-1/4" x 1"	Fluorescent Red	Permanent	420



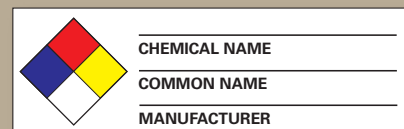
AT-301



STSP-2406



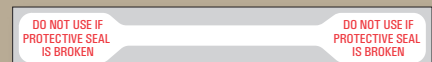
BH-405



LS-200



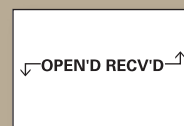
TRL-2N



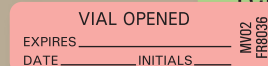
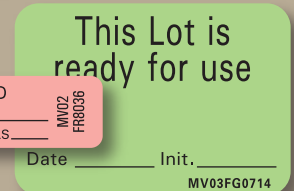
TRL-1



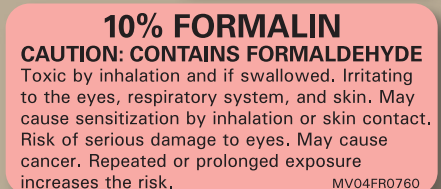
CS-2



CS-RO



Date \_\_\_\_\_ Init. \_\_\_\_\_  
MV03FG0714



Products highlighted in blue are shown above.